

Safety Precaution

This safety note describes how to make your child enjoy this book happily and safely.

Products, please be patient to read the following safety precautions.

1. When charging, you must do it from an adult. Do not let the child charge himself.
2. Must drive this car under the supervision of adults
3. This product must be assembled by adult adults before being assembled or used.
4. It is strictly forbidden to drive in dangerous places such as the swimming pool on the public street.
5. The car can not overload the maximum load capacity of 25 kg
6. This product is only suitable for children who are 3 months old and younger for 37 months and 96 months.
7. Note that some parts will be damaged due to improper driving.
8. It is strictly forbidden to change suddenly during driving. The forward switch function should change the switch function during stationary.
9. After the car is dirty, it can only be scrubbed with a clean cloth. Do not rinse with water to avoid damage to the components.
10. The charger is not a toy, please collect after charging
11. The product is a plastic product, please stay away from fire.
12. When the product is in use, the motor will generate sparks when it starts. Therefore, it is strictly prohibited to burn at the gas station.

Use in areas such as explosive danger

13. Please pay special attention to let the child touch the wheel or the position near the wheel to avoid pinching and crushing.

Do not let other children approach the car while in use.

14. The car is suitable for driving on a flat ground. Please try to avoid driving in silt or uneven terrain.
15. Do not play the children's packaging on the removed clothes to avoid accidental danger to children.
16. The product is for the child to make the guardian responsible for the month before the month to explain the contents of the instructions to guide the child correctly

Operational use

17. The seat belt attached to the car is only a toy that adds safety awareness to children.

Safety function of human vehicles

18. Please guide children how to relax the accelerator pedal. How to deal with the pedals and the car when the obstacles and how

Stop the car.

19. Insert the battery correctly, pay attention to the positive and negative poles.
20. The battery can be recharged but not heated and thrown into the fire to avoid short circuit.
21. Non-storage battery can not charge the battery can only be charged under the supervision of adults
22. When the battery power is insufficient, the remote control distance will become shorter. Please replace the battery with new one.
23. If the battery is not used for a long time, please remove the battery to avoid leakage. If the battery is dead, it should be taken out of the vehicle body.
24. The power terminals must not be short-circuited.
25. This toy car may have small parts falling off during use, so it is not suitable for 36 months or less. **Children use.**

Children's Electric Car

Children's Electric Car

Installation Instruction

Installation and operating instructions

Suitable for 3 years old and above

Executive standard: GB 6675.1-2014 GB 6675.2-2014 GB 6675.3-2014
GB 6675.4-2014 GB 19865-2005

Please keep this manual in a safe place and read it carefully before use.

- Remote control manual two control
- Remote control forward, reverse and left and right steering
- Manual switch control forward and reverse
- The steering wheel has a variety of music features
- Equipped with seat belt
- Add guide

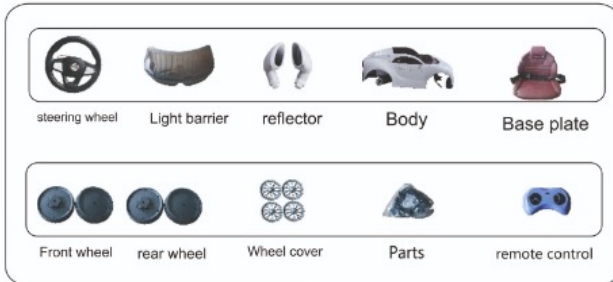


BRAINBEES SOLUTIONS PRIVATE LIMITED

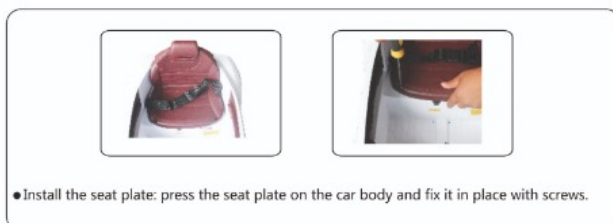
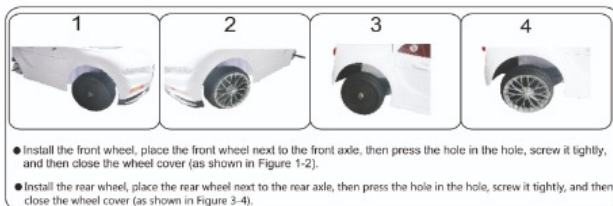
Rajashree Business Park, Tadiwala Road, Lumbini Nagar,
Sangamvadi, Pune, Maharashtra - 411001.

For any Feedback Contact:
Customer Care Executive : +91-135-3501241
or Email : customercare@firstcry.com

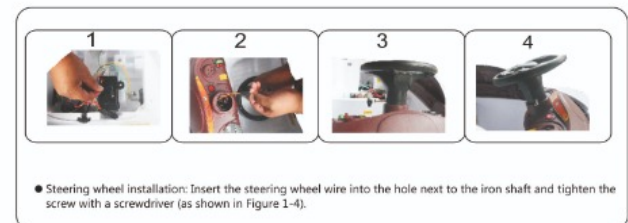
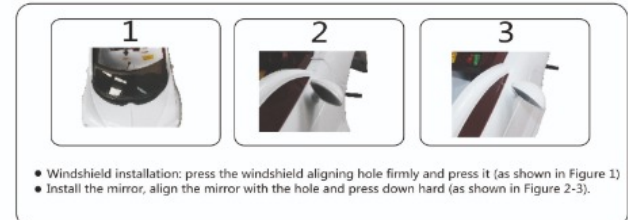
Packing List



Installation Notes



Installation Notes



Pay Special Attention to Battery Maintenance

- . Charge (10-15) hours before using for the first time.
- . Use a properly matched charger to charge the battery, otherwise it will cause damage.
- . When the car is charged faster than normal, it will reduce the battery life.
- . When the car needs to be stored, the battery must be fully charged and then every 30 days. Add this again to ensure the normal use of the battery or it will cause the battery Not charging