

6 to 15
Months

Carrying Capacity
Up to 15 kgs

User Manual

Babyhug Little Footsteps Walker

Style Code: B6BW010



babyhug[®]

baby walker

- Walker cum Rocker
- 2 Level Height Adjustment
- Musical Toy Tray
- Sturdy Frame

Please read the instructions carefully before use and keep this manual for future reference.

Parts List

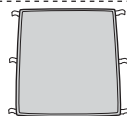
**Check that you have all the parts for this model BEFORE assembling your product.
No tools required.**



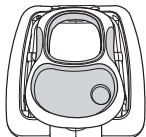
A. 6 Crystal rolling wheels



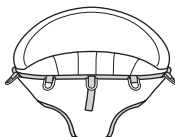
B. Large spoiler



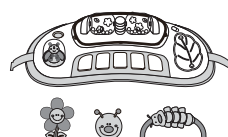
C. Foot rest



D. Baby walker frame



E. Padded seat



F. Electronic play tray

WARNING

Read the instructions carefully before use and keep them for future reference.

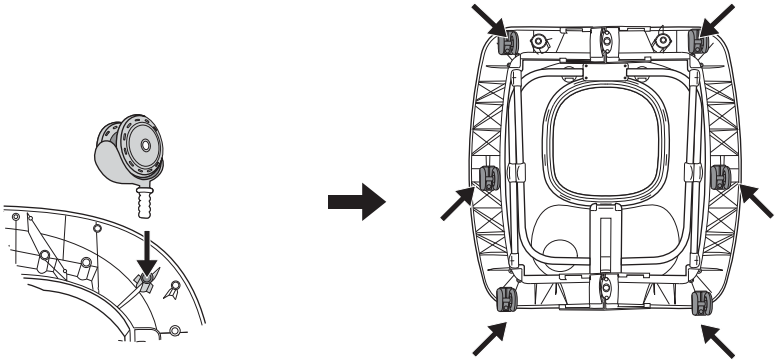
The child may be hurt if you do not follow these instructions.

Before using, remove and dispose of any plastic bags and any other packaging (e.g fasteners, fixing ties, etc.) and keep them out reach of children.

- Before using, check that the product and all of its components have not been damaged during transportation. Check regularly that the product is not broken or damaged. If the product is broken or damaged, keep out of reach of children.
- The product must only be assembled by an adult. For the correct assembly of the product, please refer to the following instructions.
- **STAIR HAZARD** : Avoid serious injury. block stairs/ step securely before using walker even when using parking brake.
- The child will be able to reach further and move rapidly when in the walking frame.
- Prevent access to stairs, steps and uneven surfaces, slopes or unstable floors, swimming pools or other sources of water. Only use the baby walker frame on flat and stable surfaces.
- Never leave child unattended. Always keep child in view while in walker.
- Guard all fires, heating and cooking appliances.
- Remove hot liquids, electrical flexes and other potential hazards from reach.
- Prevent collisions with glass in doors, windows and furniture.
- Do not use the baby walking frame if any components are broken or missing.
- This baby walking frame should be used for short periods of time(e.g.20 min).
- This baby walking frame is intended to be used by children who can sit unaided,
- approximately from 6 months. It is not intended for children weighing more than 15kg.

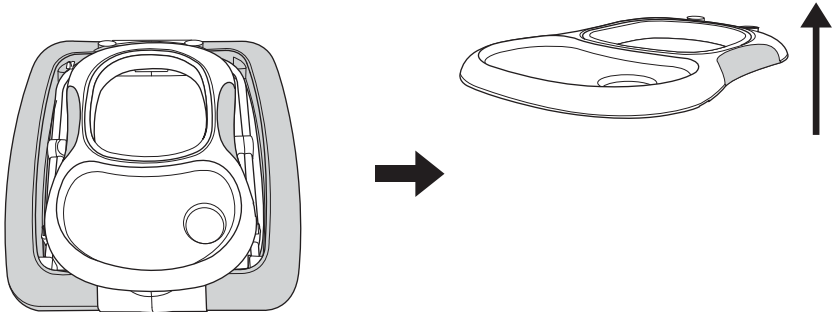
Assembling Procedures

Step 1



1. Turn the baby walker frame upside down. Fix the crystal rolling wheels in the appropriate housings. Ensure that the wheels are firmly pushed all the way into the housing on the down base of the walker.

Step 2



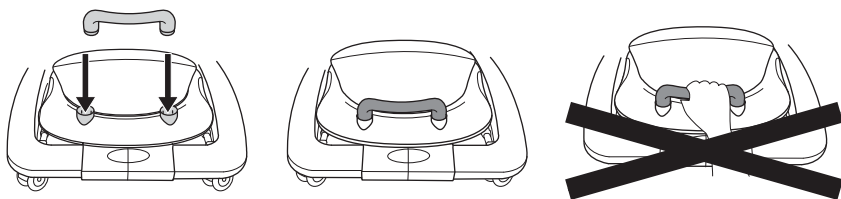
2. Open the baby walker frame in the in-use position, ensuring that all wheels touch the floor. Slowly raise the tray by pulling it in an upward direction, until a click indicates that the frame has been locked correctly in one of the three positions.

Step 3



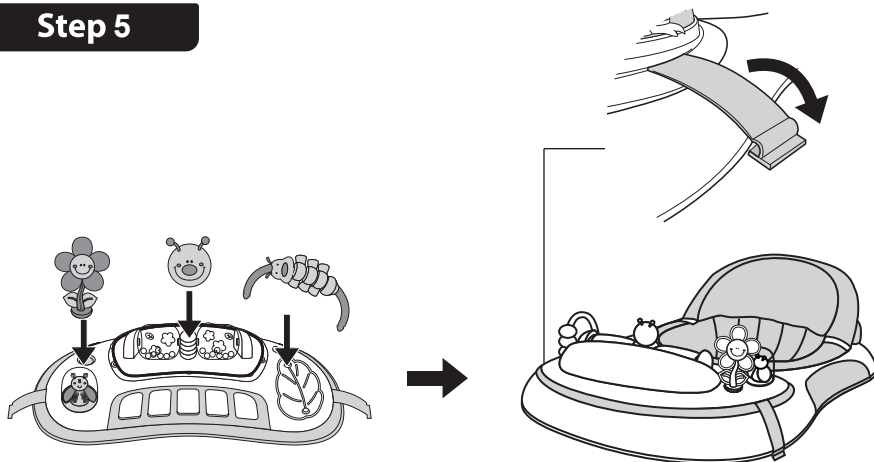
3. Insert the plastic rings of the padded seat in the slots located along the upper edge of the walker frame. Pass the rings through the slots and tug them until they clear the passage, then release them, ensuring that they are correctly locked in the position and cannot reduce into the slot.

Step 4



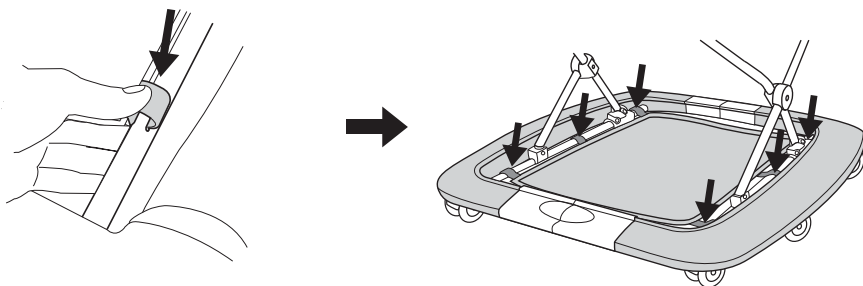
4. Fit the large spoiler on the rear walker frame; simply place it on the housings, located at the rear of the backrest, and push it firmly in a downward direction, ensuring that it has been fitted in the correct position. Please do not lift baby walker with large spoiler. It is dangerous do in this way.

Step 5



5. Insert all small toy parts into corresponding holes. Put the electronic play tray into its housing in front of the walker's seat. Listen for two click to confirm the play tray is safety locked in place.

Step 6



6. Place the hooks on to the tube at the corresponding position to fix the foot rest well when in rocking function

Step 7



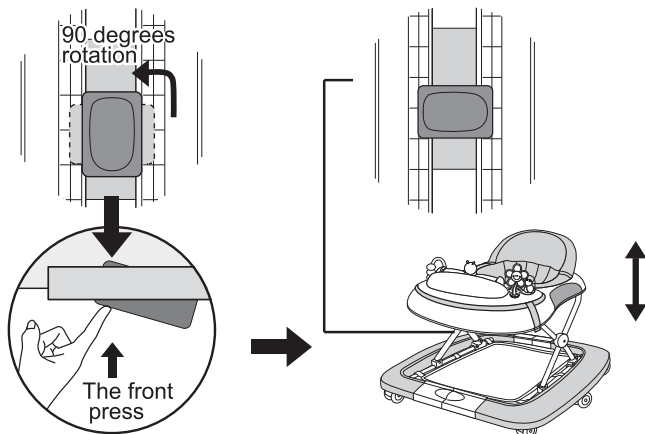
7. Completely assembled.

How to adjust the Height of Baby Walker Frame

WARNING

When opening closing or adjusting the walker, ensure that your child is at a safe distance. Before placing the child in the walker in ensure that the secondary lock button is correctly locked again.

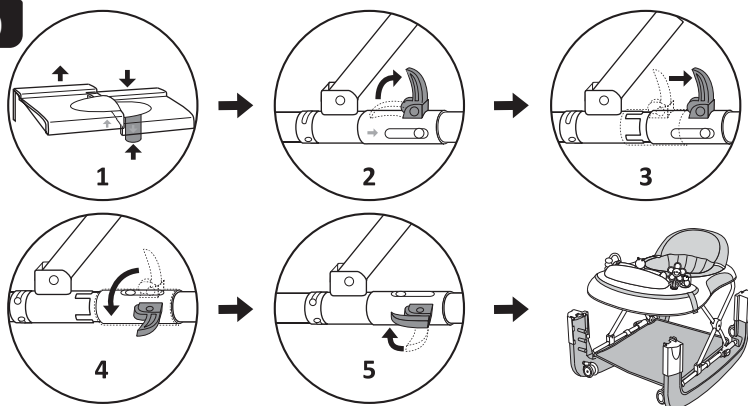
Step 8



8. To adjust the seat's height, remove the child from the baby walking frame, pull up the safe button located under the small tray table and rotate it to 90 degrees. Keep the safe button pressed, then raise or lower the small table until the desired position is reached, then pull up the safe button and rotate it to 90 degrees again to lock the small table.

How to Convert Walker to Rocker

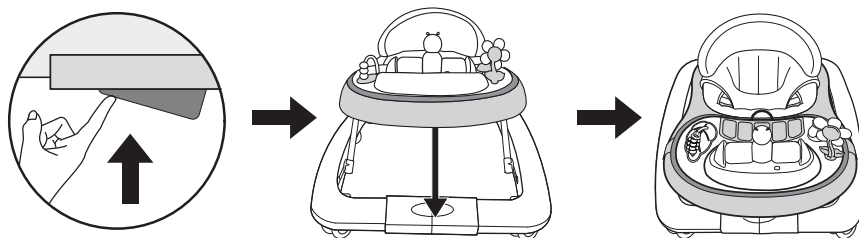
Step 9



9. Press the button and push to separate. Unlock the switch lever as indicated. Pull the switch lever and turn the half piece of base vertically out bound until the swivel axle bounce back to its position. Installation of foot rest pad.

How to Fold the Walker

Step 10



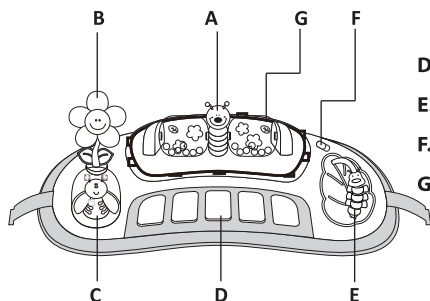
10. Press the button as shown in the picture, simultaneously pull down the upper tray to the end, the frame folds up completely.

Using Electronic Play Toy Tray

WARNING

The walker includes one electronic play tray that attaches to the walker frame as shown in step 5. The function and use of the play tray are shown here.

Step 11



- A. Cute bee rotating toy
- B. Rotate flower-shaped windmill 360 degrees to have fun
- C. Lights twinkle with music when the lovely ladabug is pressed
- D. Press the piano keys to listen to splendid music
- E. Move carpenter worm back and forth
- F. Switch
- G. Push roller forward and pull backward

Fitting and / or Replacing Batteries

WARNING

- The toy of the walker frame requires 2X"AA" 1.5 Volt alkaline type batteries (not included).
- Batteries must only be fitted by an adult.
- To fit and/or replace batteries: Loosen the screw on the battery compartment cover with a suitable screwdriver, press the tab and remove the battery compartment cover. then remove the spent batteries and fit new ones, ensuring that they have been fitted in the correct polarity, as shown inside the battery compartment. Replace the battery cover and tighten the screw.
- Always keep batteries and tools out of reach of children.
- Always remove spent batteries from the toy to avoid the danger of possible leakage from the battery damaging the product .
- Always remove the batteries if the toy will not be used for a long period. Only use alkaline batteries of the same type of equivalent to the type recommended for the correct function of this product.
- Never mix new and old batteries, or different types of batteries.
- Do not burn or dispose of spent batteries into the environment.
- Dispose of spent batteries at appropriate differentiated collection point.
- Do not short-circuit the battery terminals.
- Do not attempt to recharge non-rechargeable batteries: they might explode.
- The use of rechargeable batteries is not recommended and cannot be used.

Product Care and Maintenance

- Check regularly the walker frame for signs of damage.
- Clean the plastic parts, including the stoppers, with a damp cloth.
- Clean the seat with brush & family soap.
- Dry the metal parts to prevent the formation of rust.
- Prolonged exposure to direct sunlight may cause the fabric to fade.