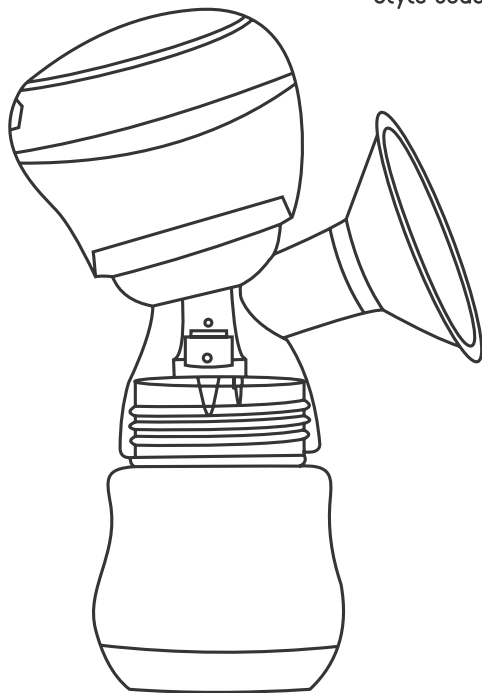


User Manual

Babyhug Electric Breast Pump

Style Code: FNBF025



babyhug®

breast pump

Please read the instructions carefully and keep for future reference.

PARTS DESCRIPTION

Dust-proof cover

Silicone shield

Breast pump body

Silicone diaphragm

Silicone valve

Adapter ring

Electric unit

Power Adapter

Nipple

Feeding bottle

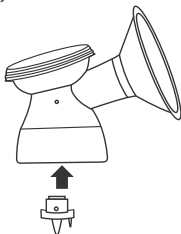
INTRODUCTION:

Babyhug Portable Electric Breast Pump has a unique design that enables you to keep a more comfortable posture. The soft massage pad design provides soft and warm feeling, and mimics baby's sucking action, enabling the milk to flow effortlessly, comfortably, tenderly, and rapidly. The breast pump is compact and easy to assemble. Each part is easy to wash in dishwasher and is BPA free.

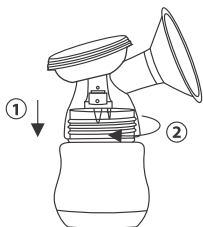
Researches proved that, breast milk is the best nutritional food for babies under one year. After 6 months of baby's birth, breast feeding can be continued and gradually you may complement with supplementary food. Breast milk is perfect for the requirement of baby as the antibody included will provide protection to the baby against infection and irritability. A breast pump can assist you to extend the period of breast feeding. You may express and store the milk. Even if you are not able to breast feed the baby by yourself they may have your milk through the pump. On account of the small and exquisite structure of the breast pump, it can be concealed for expressing. Therefore, you may carry it with you and express in your own good time, providing milk for your baby.

INSTALLATION INSTRUCTIONS:

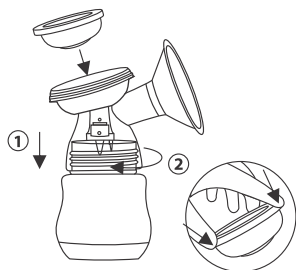
Before first & each use, clean and sterilize all parts of the breast pump. Make sure to wash your hands thoroughly before touching the cleaned parts. Be careful while handling sterilized parts as they may still hot.



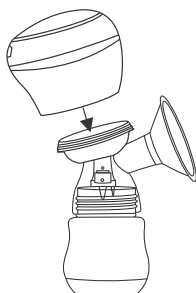
Step 1: Insert the silicone valve into the pump body from below and push it in to full extent.



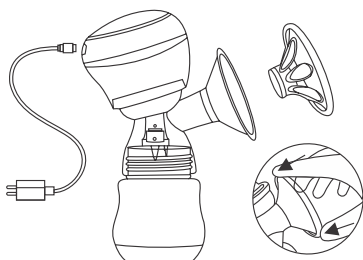
Step 2: Fix the pump body on to the feeding bottle until it is completely fixed.



Step 3:
Place the silicone diaphragm into the pump body from above. Make sure it fits securely around the rim. Press down with your fingers to ensure a perfect seal.



Step 4:
Fix the electrical unit with the silicone diaphragm.



Step 5:
Place the silicone shield into the funnel-shaped section of the pump body. Push in the inner part of the silicone shield as far as possible and make sure that it is perfectly sealed all around the rim of the pump body. Press the silicone shield to remove any trapped air. Install the power adapter into the pump body and then you are ready to use the breast pump.

BATTERY INFORMATION



Green	: Fully Charged
Yellow/Red	: Half Battery Power
Red	: Low Battery (charging required)
Battery Indicator Glitters	: Charging

ATTENTION:

- Do not charge the battery for more than 24 hours. Over charging for long time may damage the battery.
- The light glitters when in charging mode, and turns green once it is fully charged.
- Before the first use please charge it for more than 4 hours
- 1100mAh battery, lasts for about 2-3 hours and takes about 2 hours to get fully charged

HOW TO USE

1. Wash your hands thoroughly and make sure your breasts are clean. Relax in a comfortable chair. (You may wish to use cushions to support your back) Make sure you have a glass of water nearby.
2. Press the pump body against your breast. Make sure that your nipple is centered so that the silicone shield creates an airtight seal.
3. Press the On/Off button; the breast pump will automatically start up in Massage Mode, and you can change the strength of the massage through the key + and -. When the breast milk flows, you can press the mode change button from massage to express, and choose the level that's suitable for you.

NOTE: Not necessary to choose the Max Mode for expressing, just choose the most comfortable mode for you.

4. When you have finished expressing, switch off the breast pump and carefully remove the pump body from your breast.
5. Unscrew the bottle from the pump body to make it ready for feeding/storage.
6. Unplug the motor unit.
7. Clean the other used parts of the breast pump according to the instructions under "Cleaning and Sterilizing".

OPERATING INSTRUCTIONS

Press the On/Off Key (Massaging Mode starts automatically)

Press the Mode Switching Key (Massaging/Expressing/Mixed Mode)

A hand symbol means massage mode and another icon means expression mode. Massage Mode: 9 Levels Fast frequency and light suction to make mums feel relaxed

Milk Expressing Mode: 9 Levels

Lower frequency to help mums to have a better lactation

Mixed Mode (Massaging + Expressing): 9 Levels.

Combines massage and expression mode

- The default working time of this breast pump is 30 minutes. After that, it will automatically power off. It will remember your expressing habit before powering off.
- The milk in the bottle cannot be too full or exceed the position of silicone valve.

STORAGE AND HEATING

Breast Milk Storage

After expression, fasten the storage cap or seal the storage bag, which must immediately be put into a cold storage or refrigerator.

Heating Breast Milk

You can heat with the help of Babyhug bottle warmer or in a bowl of warm water. Do not put the frozen breast milk directly into the microwave or boiling water, this may result in loss of nutrients. The heated breast milk may be used to feed your baby.

USING BREAST PUMP

It is recommended (except advised otherwise by your health care professional / breast feeding adviser) to wait until your milk supply and breast feeding schedule are established (normally after 2 to 4 weeks of child birth).

- However, can be used for expressing milk for your baby to be given in hospital.
- Can be used if your breasts are engorged (painful or swollen), you can express a small amount of milk before or between feeds to ease the pain and also help your baby latch on more easily.
- Can be used if you have sore or cracked nipples not caused by the use of breast pump, to extract the milk until they are healed.

FOR SUCCESSFUL MILK EXPRESSING

Choose the best period of a day to express milk, e.g. in the morning with abundant milk, before or after the first feed for baby. If you are at work, you may express milk when resting during work breaks. Practice is required to use breast pump; initially it might take several attempts before getting accustomed.

Be familiar with the breast pump and its operation procedure before you use it for the first time. Choose a time when you are not in a rush and will not be interrupted. A photograph of your baby can help encourage the "let-down" reflex. Warmth can also help: try to express after a bath or shower; or place a warm cloth on the breast for a few minutes before you start expressing. You may find it easier to express while your baby is feeding from the other breast, or immediately after a feed. If expressing becomes painful, stop and consult your breast feeding adviser or health care professional.

ATTENTION AND CAUTION

1. To ensure hygiene, it is recommended to be used by a single user.
2. While assembling or disconnecting parts, care should be taken and too much strength should be avoided.
3. Never keep under direct sunlight or any source of heat as this can damage the product.
4. If you want to freeze breast milk, 3/4 of the bottle may be enough in order to leave space for ice expansion. Never store the breast milk on the door side of a fridge.
5. Keep the product out of reach of children when not in use.
6. To defrost, keep the bottle in the refrigerator compartment.
7. Gently shake the feeding bottle so as to mix evenly.
8. Do not put the frozen breast milk directly into the microwave or boiling water, this may result in loss of nutrients.
9. Do not freeze the defrosted milk again.
10. Do not mix fresh and defrosted milk.

FAQ SOLUTIONS

Lack of Suction	Examine whether parts of the breast pump are correctly assembled and make sure there are no air gaps. Loosely fitted parts or air gaps may affect the efficiency of the product. NOTE: Never rub it while washing.
Unable to Express Milk	Make sure that the suction is sufficient and the assembling of the breast pump is correct. Relax and retry it, milk will be expressed after repeated trials. Please refer to the hints given for successful suction, "Tips for Successful Milk Expressing"
Experiencing Pain During Use	The possible reason is the overexertion of suction. Try to massage and stimulate the breasts by Massage mode and then convert it to express mode. Also, you may consult with your health care professional or breast feeding experts.
Can't Turn On	Please check whether the connection between adapter and power or electrical unit is correct. If battery runs out, please charge it before use.
Anti-Flow	If the breast milk or water get into the silicone diaphragm, please stop using the breast pump, clear and dry it. If the silicone diaphragm is damaged, please replace it.

CLEANING AND STERILIZING

Note: The electric unit and the power adapter should not be sterilized

1. Clean and sterilize all the parts of the breast pump before first use.
2. Clean all parts immediately after each use and sterilize them before every use.
3. Disassemble it completely. Also, remove the silicone valve.
4. To remove the silicone valve, gently pull at the ribbed cap on the side of the valve. Be careful when you remove the valve and when you clean it. If it gets damaged, your breast pump may not function properly.
5. Clean all parts in hot water with some mild washing liquid and then rinse thoroughly. *Babyhug Multipurpose Liquid Cleanser* is recommended for best results
6. To clean the valve, rub it gently between your fingers in warm soapy water. Do not insert objects into the valve, as this may cause damage.
7. Sterilize the cleaned parts of the breast pump in a steam sterilizer or place in boiling water for 5 minutes.

SPECIFICATIONS

1. Power Adapter Input: 100-240V ~ 50-60Hz
2. Power Adapter Output: 5V^{max}1000mA
3. Nominal Voltage: 5V
4. Rated Power: 3W
5. Lithium Battery: 3.7V 1100mAh
6. Warranty: 1 Year
7. Fixed Using Time: 30 Minutes
8. Suction: 50mmhg-280mmhg
9. Noise: <60dB
10. Cycle: 29-97 per minute
11. IP Level: Ip22
12. Working Environment: 10-30C, RH15%-93%, 700-1060hPa
13. Environment for Storage and Transportation: -25-50C, RH15-93%, 700-1060hPa

Imported & Marketed by:

Brainbees Solutions Pvt. Ltd.

Corporate & Registered Office Address:

Rajashree Business Park, Plot No.: 114,
Survey No. 338, Tadiwala Road,
Near Sohrab Hall, Pune - 411001

For Any Feedback, Contact:

Customer Care Executive No.: 020-46608179

E-mail: customercare@brainbees.com

Customer Care Address :

Same as Marketer's address