

Bonfino

Imported for & Marketed By:

Brainbees Solutions Pvt. Ltd.
Corporate And Registered Office Address:
Rajashree Business Park, Plot No.:114,
Survey No.338, Tadiwala Road,
Near Sohrab Hall, Pune 411001

For any feedback contact:

Customer Care Executive No.: +91-135-3501241
or E-mail: customercare@brainbees.com
Customer care Address:
Same as Marketer's Address.

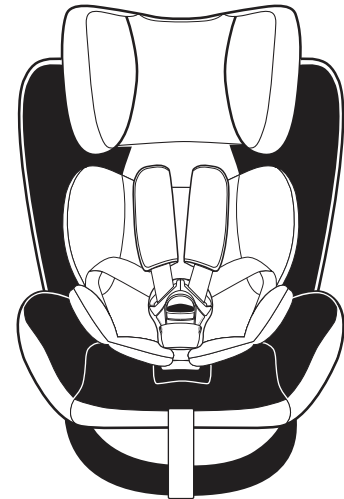
Bonfino

Compass Isofix Car Seat User's Manual

Age Group

0+

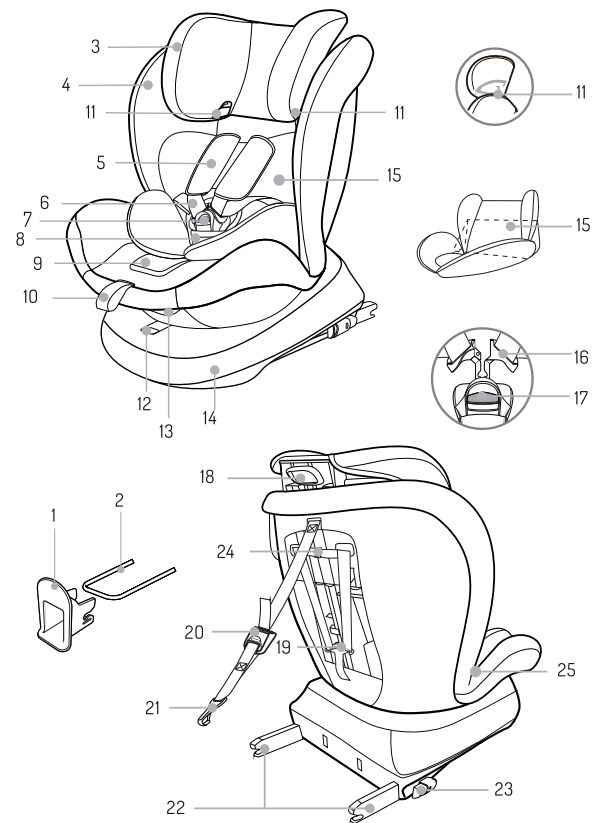
MONTHS



Special Injection Mold Structure
Premium Linen Fabric Cushion

4-Level Reclining & 7 Position Headrest

1. Parts & Accessories



Note – Please take a few minutes to read this manual. This will help you assemble and use the car seat suitably. Keep this manual for future reference.

Before assembly, please double check all parts as shown are included in the package. For any missing or defective parts, or sharp edges, please contact customer service immediately. To guarantee the service life of the car seat, please use it correctly under the instructions and make it through inspection regularly. Never use it if any parts are missing or broken.

- | | |
|-------------------------------------|-------------------------------|
| 1. ISOFIX Insertion Aids | 14. Red Release Button |
| 2. ISOFIX Fastening Points(vehicle) | 15. Belt Guidance |
| 3. Headrest | 16. Recline Handle |
| 4. Seat Cover | 17. Base |
| 5. Shoulder Pads | 18. Shoulder Straps Connector |
| 6. Shoulder Straps | 19. Headrest Height Adjuster |
| 7. Harness Buckle | 20. Top Tether Adjuster |
| 8. Crotch Pad | 21. Top Tether Clip |
| 9. Adjustment Button | 22. ISOFIX Locking Arms |
| 10. Adjustment Strap | 23. ISOFIX Buttons |
| 11. 360° Rotation Adjuster | 24. Shoulder Pads Connector |
| 12. Seat Reducer | 25. Belt Guidance |
| 13. Buckle Tongues | |

2. How to Use

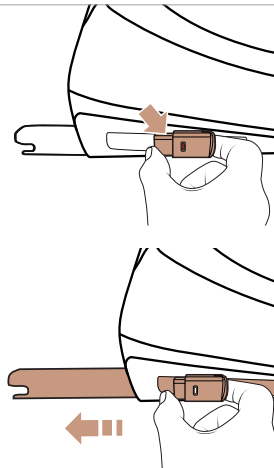
A. ISOFIX

1.1



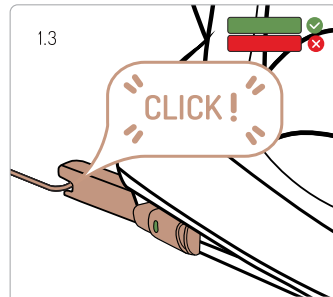
If your vehicle is not fitted with ISOFIX insertion aids as standard, clamp the two ISOFIX insertion aids (1), which are included in the seat, with the opening pointing upwards, to the two ISOFIX fastening points (2) of your vehicle. If you don't have ISOFIX insertion aids (1), please ignore this step.

1.2



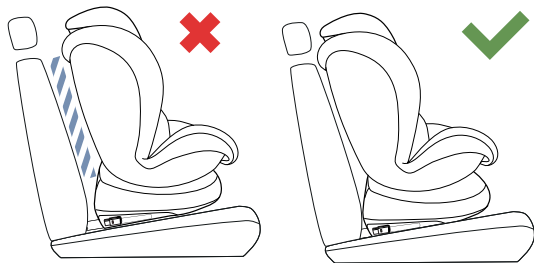
Press the ISOFIX buttons (23) to push out the two ISOFIX locking arms (22) from the seat base.

1.3



Push back the child safety seat until the child safety seat is resting firmly against the vehicle seat as you hear a clicking sound which indicates they are fully engaged. And on both sides of the ISOFIX indicator changes from red to green (safety) color.

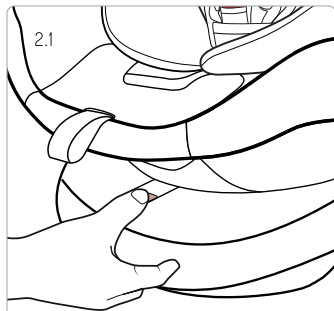
1.4



Move the child safety seat backwards and push the backrest against the vehicle seat.

B. Rotation

2.1



Press the 360° rotation adjuster (12) with the thumb rotating the seat shell.

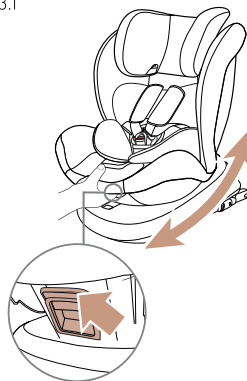
2.2



Rotate the seat shell so it is facing either forwards or backward, depending on the weight of your child, until it engages with a clicking sound.

C. Seat Angle

3.1



The seat shell of this car seat can be used in 4 different reclined positions facing forwards and in fifth level position facing backwards: Pull the recline handle (13) up, then the seat can be adjusted. It can be adjusted to 4 positions for forward-facing use. When the seat is in the position of the fourth level, rotate the seat to the rearward direction, and the seat can be adjusted to the fifth level.

3.2

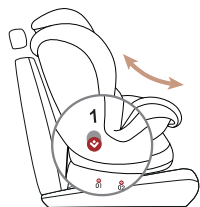
Fifth Level
(Lying Level)



0-18kg: rearward-facing installation, use the fifth level.



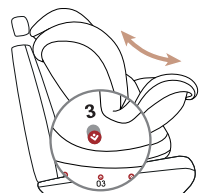
3.3



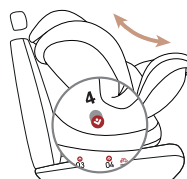
First Level ✓1



✓2 Second Level



Third Level ✓3



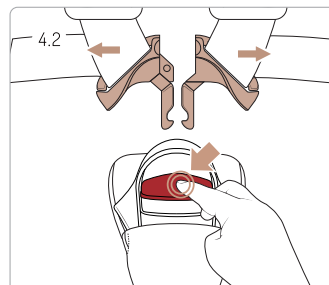
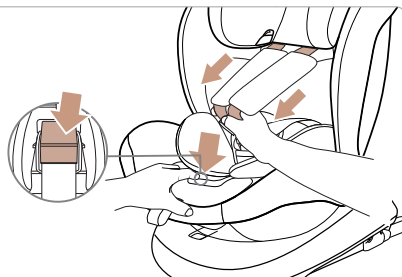
✓4 Fourth Level

9-18kg: forward-facing installation, use the first level to the fourth level.
15-36kg: forward-facing installation, use the first level.

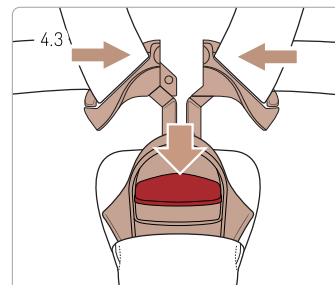
D. Put the Child in

4.1

Loosen the shoulder straps (6) by pressing the adjustment button (9) and pull both shoulder straps forwards, loosening them as much as possible.

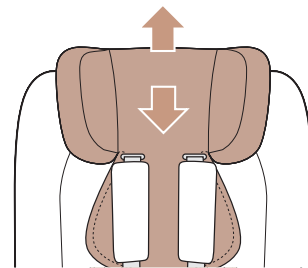
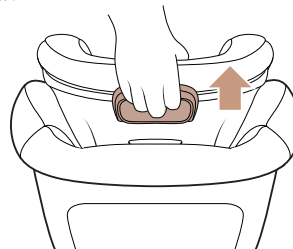


Press the red release button (17) to open the harness buckle (7). Place the child in the safety seat.



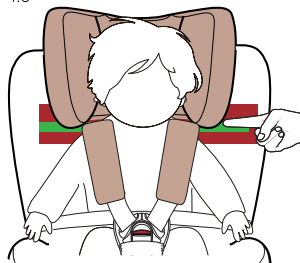
Bring both buckle tongues (16) together. Lock buckle tongues in harness buckle (7), until they engage with a clicking sound.

4.4



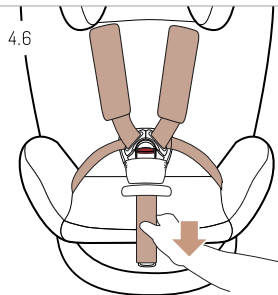
Pull the headrest height adjuster (18), select the correct height of the headrest (3) and engage it in a position that fits your child by releasing the adjuster.

4.5



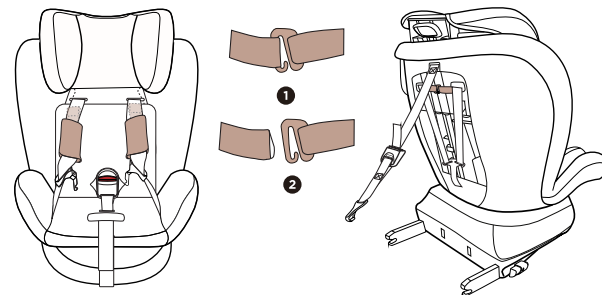
Adjust the headrest (3) to the proper position. Make sure the distance between the child's shoulder and the bottom of the headrest is lower than one finger.

4.6



Pull the adjustment strap (10) until the strap lies flat and snug on your child's body. Make sure that the shoulder straps are slightly higher or equal to the child's shoulders.

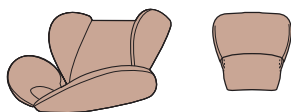
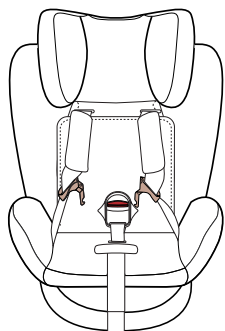
5.2



Loosen shoulder straps (6) and then remove shoulder pads straps according to the shoulder pads connector.

E. Store 5-Point Harness

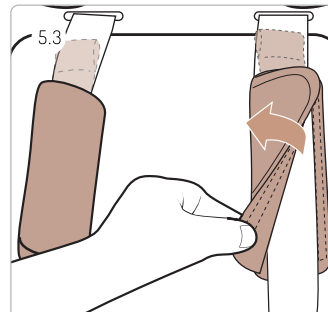
5.1



Once the child reaches a weight of 15kg, the 5-point safety harness should be stored away and the child should be secured with the vehicle belt.

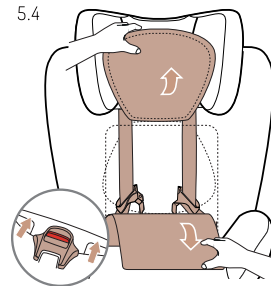
Open the harness buckle (4.2) as shown. Remove seat reducer (15) and crotch pad (8).

5.3



Tear off the velcro and remove the shoulder pads.

5.4



Open seat cover (4). Hide shoulder straps (6) and buckle tongues (16) under the cover and hide the harness buckle (7) to the storage.

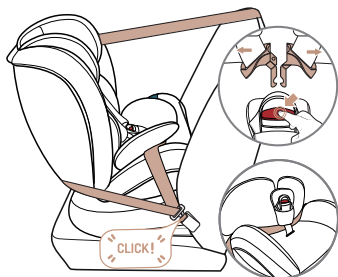
Reattach the 5-point harness:

Follow the steps for <store 5-point harness> in reverse order.

Rearward-facing (0-13KG) Installation

Install the child safety seat with belt

6.1



Pull out the vehicle belt and lock into the vehicle seat buckle, with the diagonal belt bypassing the rear of the seat. Place the diagonal belt in the same position and the upper part goes through the gap between the headrest and backrest. Open the harness buckle with the lap belt going between the seat reducer(15) and the backrest.

6.2

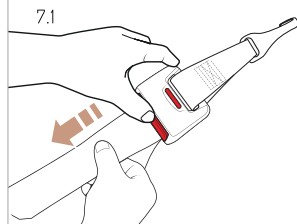
Tighten the vehicle belt in the direction of the arrow as shown, adjust the lap belt first, then the diagonal belt, which must pass between the headrest and the backrest. Ensure the vehicle belt is not twisted.



Rearward-facing (0-18KG) Installation

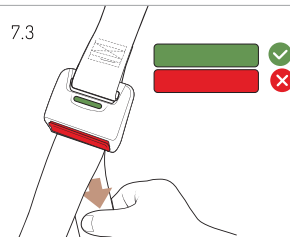
Install the child safety seat with ISOFIX + TOP TETHER

7.1



Pull out the top tether, by pressing the top tether adjuster (20) button.

7.3



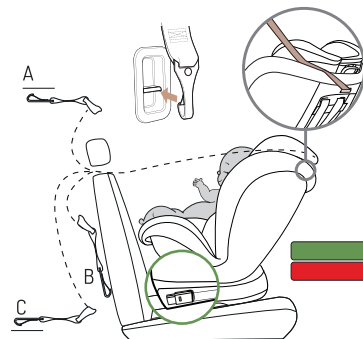
Make sure the top tether strap is tightened up and make sure the top tether adjuster (20) indicator turns into green safety color.

7.2



Pull the top tether long enough to hang the top tether clip (21) on the fixed point, which is on the back of the vehicle seat; the position of the fixed point is shown in the picture (one of the A/B/C positions).

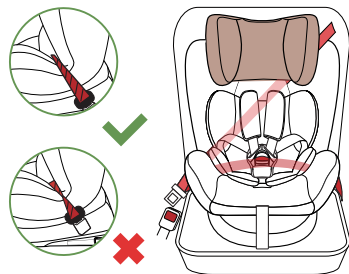
Make sure the top tether goes through the gap between headrest (3) and backrest.



Forward Facing (9-18KG) Installation

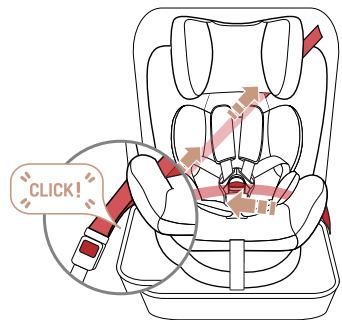
Install the child safety seat with BELT or BELT + ISOFIX

8.1



Pull out the belt from the belt ALR (Automatic Locking Retractor). The diagonal belt passes through the gap between the headrest and backrest, then pull the diagonal belt and lap belt together through the other side guidance (25) on the seat base.

8.2

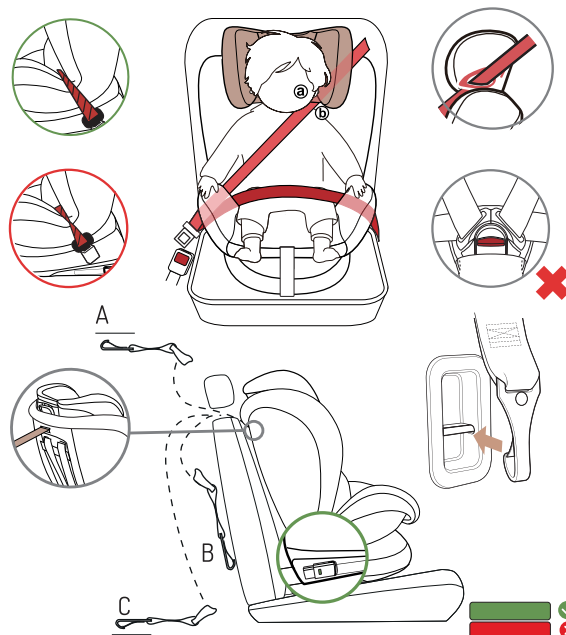


Lock the tip of the buckle into the vehicle seat buckle with a clicking sound. Follow the direction of the arrow to tighten the belt, and put the redundant belt into ALR. Shake the child safety seat to make sure it is securely attached.

Forward Facing (15-36KG) Installation

Install the child safety seat with only BELT or BELT + ISOFIX or BELT + ISOFIX + TOP TETHER

9.1



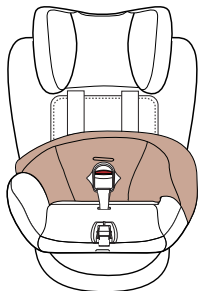
Pull out the belt from the belt ALR (Automatic Locking Retractor). The diagonal belt passes through the same side of guidance (11) on the headrest, then pull the diagonal belt and lap belt together through the other side guidance (25) on the seat base.



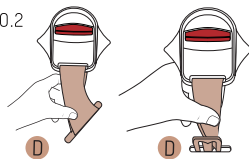


Lock the tip of the buckle into the vehicle seat buckle with a clicking sound. Follow the direction of the arrow to tighten the belt, and put redundant belt into ALR. Shake the child safety seat to make sure it is securely attached.

Remove Harness Buckle



Open the harness buckle (4.2) as shown. Remove crotch pad (8). Lift up the seat cover, pull down harness buckle (7) across seat cover (4).



Rotate the metal plate on crotch straps by 90° vertically and then take out the harness buckle (7) from the slot (D). To re-install harness buckle (7) follow the steps referred to (10.2) in reverse order until the metal plate is hooked into the harness slot. Thread the harness buckle (7) through the crotch pad (8) on the cover. Make sure the metal plate is under slot (D) when you are using it.

For Your Child's Safety

- Airbags can cause injury. Do not use this child seat on a passenger seat fitted with a front airbag unless it can be deactivated.
- Buckle failure will cause injury. Do not oil any part of the buckle.
- Always check there is no food debris or other such matter in the harness buckle.
- Never use the car seat without the backrest as it will not protect your child in the event of an accident.
- A correctly adjusted harness is essential for your child's protection. There should not be more than two fingers width between the harness and your child.
- Toxic cleaning fluids can cause damage. Never use bleach, do not iron, do not machine wash, do not tumble dry as this could damage the cover and require replacing.
- Always replace the car seat after an accident, in case of any unseen damage.
- Do not use the car seat without the seat cover. Do not replace the seat cover with any cover other than the one recommended by the manufacturer, as it directly influences the safety performance of the car seat.
- Ensure that your car seat is secured at all times while in the vehicle using the vehicle's seat belt or ISOFIX system, even when not in use. An unsecured car seat can cause injuries in the event of a collision.



CAUTION

Keep these instructions with the car seat in case you need to refer to them again in the future. Failure to follow these instructions may affect your child's safety.

- Your car seat must be positioned and installed so that, under normal vehicle usage conditions, no part can become jammed under or between any moveable seat or in the vehicle door.
- Do not modify or add to your car seat in any way without the approval of a competent authority or the manufacturer, as this will void any warranty.
- Shade your car seat from sunlight to avoid hot items causing injury to your child.
- Do not leave your child unattended when in the car seat and in the vehicle.

- Make sure there is no loose luggage or other large objects that are likely to cause injuries in the event of an accident. These may cause injury to other occupants. Always secure loose items.
- Make sure all hard or plastic parts are stored away when not in use and therefore cannot be misplaced.
- During cold winter conditions take care that any change of clothing has not reduced the tension and effectiveness of the car seat harness.

Care & Maintenance

- The cover can be removed and washed with a mild detergent in a washing machine.
- The baby reducer can be washed in the same way as the cover. Remove all foam parts from the top and bottom sections before washing. These must not be washed.
- The shoulder pads can be removed and washed in lukewarm soapy water.
- The plastic parts and the harnesses can be cleaned with soapy water. Do not use any caustic cleaning agents (such as solvents).
- Soak the harness buckle (7) in warm water containing washing-up liquid for at least an hour. Rinse the buckle thoroughly and dry it.

Notice

This car seat is a "Universal" child restraint system. It has been approved in accordance with regulation ECE R44/04, and is suitable for general use in vehicles that are fitted with 3 point static or retractable lap and diagonal seat belts approved to ECE R16 and with ISOFIX anchorages approved to ECE R14.

This child restraint is likely to fit if the vehicle manufacturer states that the vehicle approval specifies suitability for "Universal" child restraint systems Class A, B, BI.

This restraint system is classified as "Universal" in accordance with the strictest approval criteria, whereas earlier models do not correspond to these new provisions.

This restraint system is classified as "Universal" use and is suitable for fixing into seat positions according to the vehicle fitting list provided.

If in doubt, contact the manufacturer or retailer of the car seat.