

Bonfino

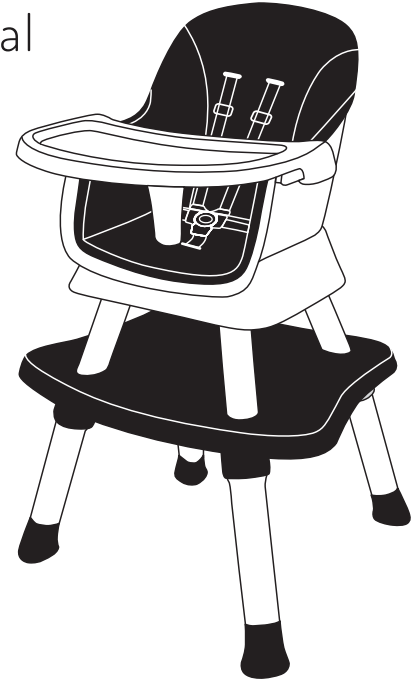
Bliss High Chair User's Manual

Age Group

0-36
MONTHS



6 in 1
DESIGN



Washable Seat Cover,
Adjustable Food Tray

Bonfino

Imported for & Marketed By:

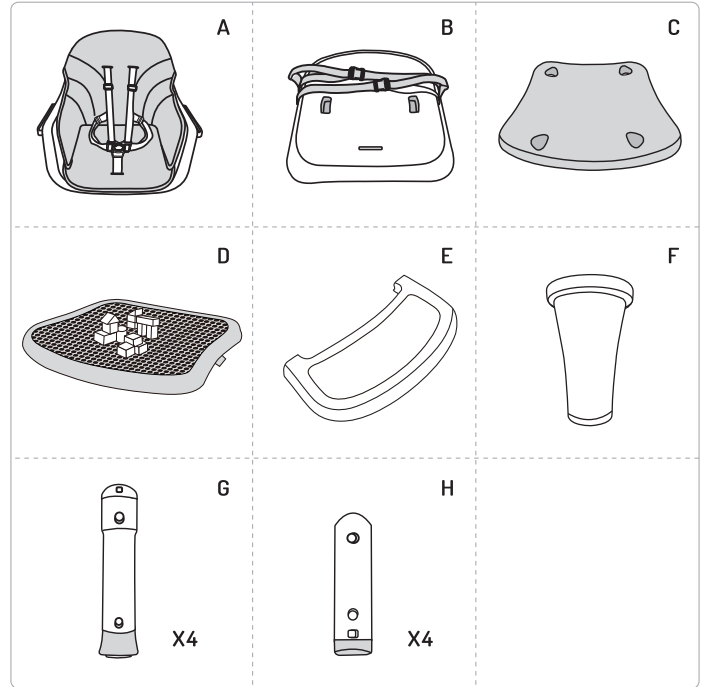
Brainbees Solutions Pvt. Ltd.
Corporate And Registered Office Address:
Rajashree Business Park, Plot No.:114,
Survey No.338, Tadiwala Road,
Near Sohrab Hall, Pune 411001

For any feedback contact:

Customer Care Executive No.: +91-135-3501241
or E-mail: customercare@brainbees.com
Customer care Address:
Same as Marketer's Address.



1. Parts & Accessories

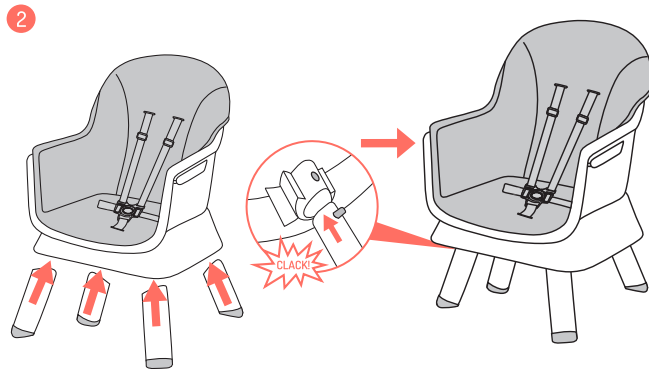
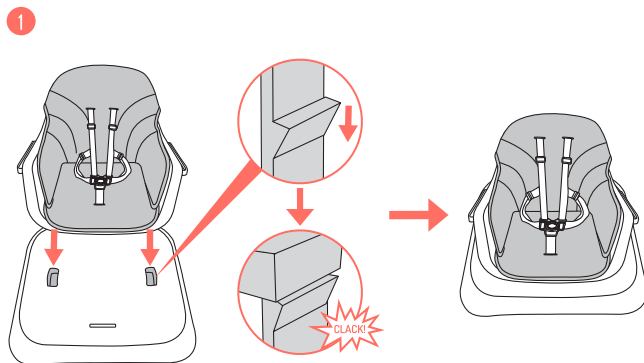


Note - Please take a few minutes to read this manual. This will help you assemble and use the high chair suitably. Keep this manual for future reference.

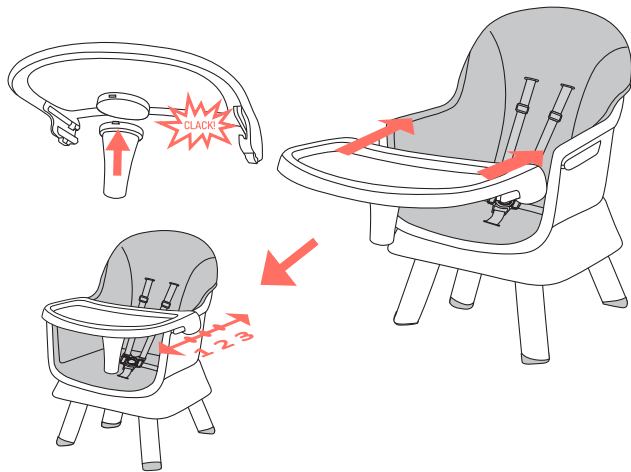
Before assembly, please double check all parts as shown are included in the package. For any missing or defective parts, or sharp edges, please contact customer service immediately. To guarantee the service life of the high chair, please use it correctly under the instructions and make it through inspection regularly. Never use it if any parts are missing or broken.

- A. Seat unit
- B. Seat base
- C. Table
- D. Game table cover
- E. Serving tray
- F. Safety stop
- G. Upper leg
- H. Lower leg

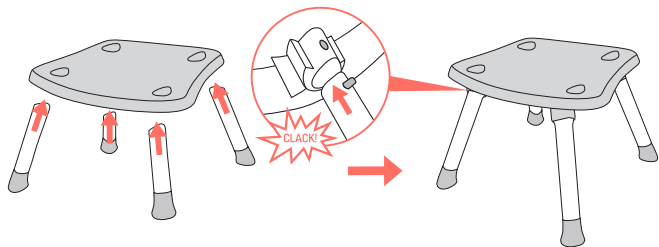
Assembly Instructions



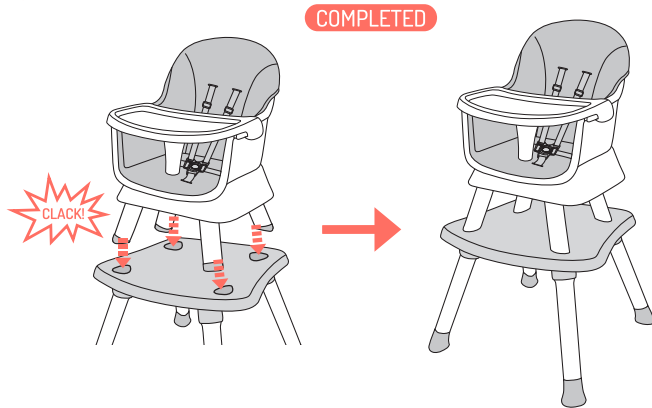
3



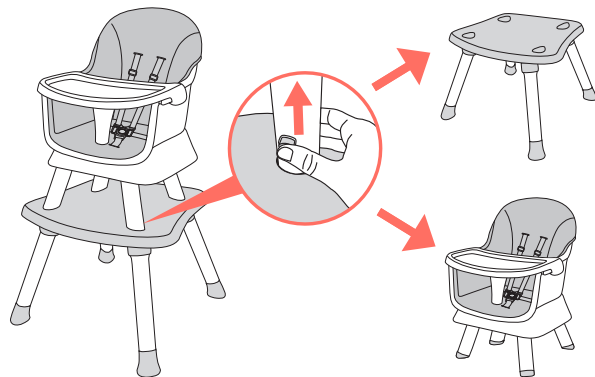
4

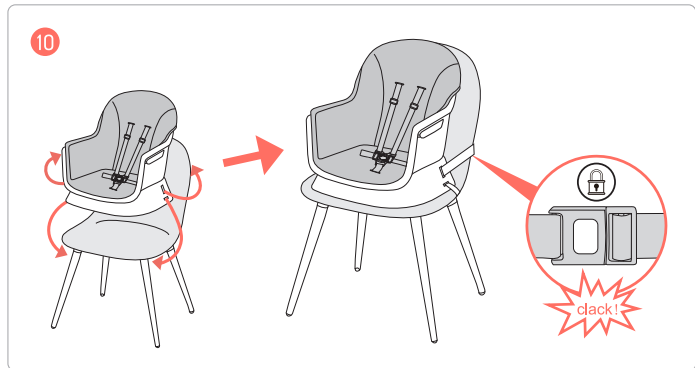
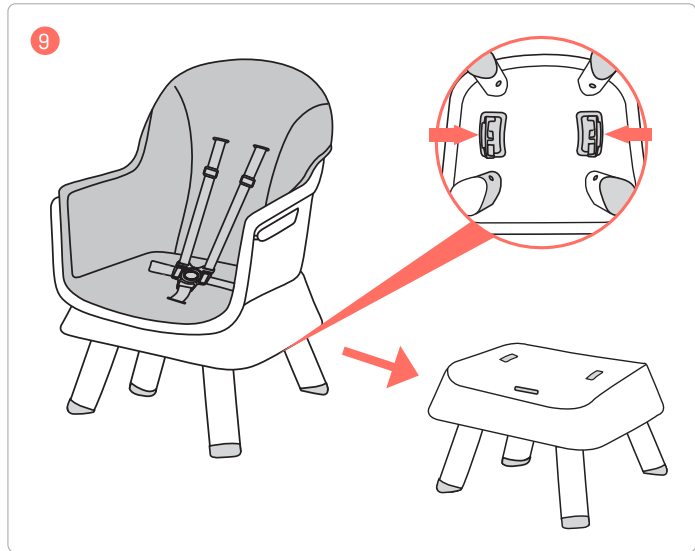
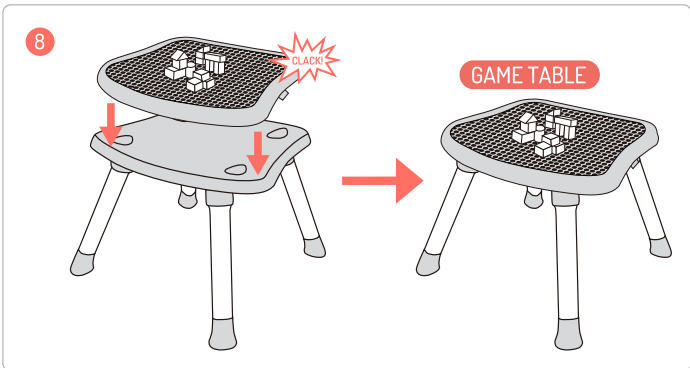
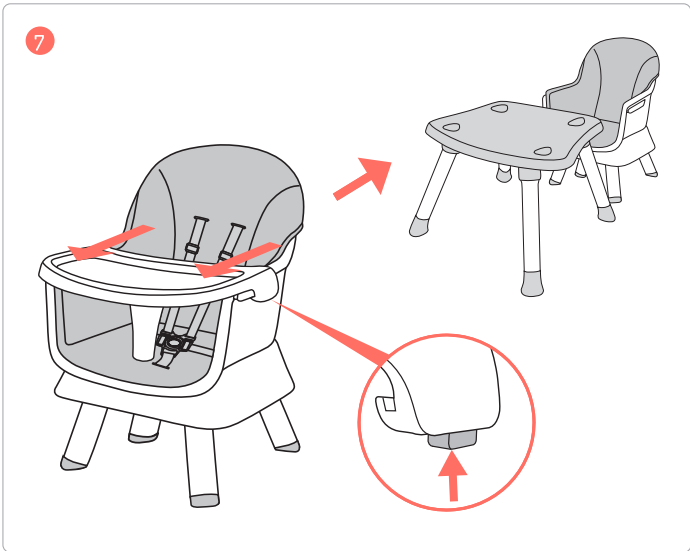


5



6







WARNING!

- Adult assembly required.
- Never leave the child unattended.
- Always keep the child in view while in the highchair.
- Always use restraints, and adjust to fit snugly.
- Stay close and watch the child during use.
- Secure your child at all times with the restraint system provided, both in the reclined and upright positions.
- The tray is not designed to hold your child in the chair.
- It is recommended that the high chair be used only by children capable of sitting upright unassisted.
- Always lock the wheels when the child is sitting in the high chair, or when the highchair is open but not in use.
- Ensure placing the highchair on a horizontal, stable surface. Never place the highchair near stairs or steps. Do not move the chair with a child in it.
- The high chair is designed to accommodate one child at a time.
- Discard use if any part is broken, torn, or missing.
- Ensure that all components are correctly fitted and adjusted before and after each use.
- Do not place any heavy bags, packages, or other items on the highchair tray. They may cause the chair to tip over.
- This highchair is recommended for children who can sit upright unassisted OR do not weigh more than 25 kg and are not more than 36 months old.
- Do not place the chair near any heat source, electric bar, fires, gas fires, etc., or where a child could gain access to any other kind of hazard.

- Ensure all users are familiar with the product's operation. It should always open and fold easily. If it does not, do not force the mechanism, instead refer to the assembly instructions.
- All hazards such as electrical flex should be kept out of reach of the child in the high chair.

Wash Care Instructions

Maintenance

- Periodic maintenance is required to ensure the high is in good working order.
- Regularly check all parts of the product to ensure that they are operating correctly and for any signs of wear or damage.

Cleaning

- Never clean any part of the highchair with abrasive, ammonia-based, bleach-based or spirit-type cleansers.
- Ensure the product is completely dry after cleaning before use or storage.
- Make sure the highchair is stored in a dry place to prevent mold or mildew development.
- Frame Cleaning: Wipe with a damp cloth and wipe dry with a soft cloth.
- Harness Cleaning: Sponge clean with a mild soap and water solution. Rinse and wipe dry.