

# User Manual

Portable 2-in-1 Breast Pump Electric and Manual

Style code: FNBF020



**babyhug®**

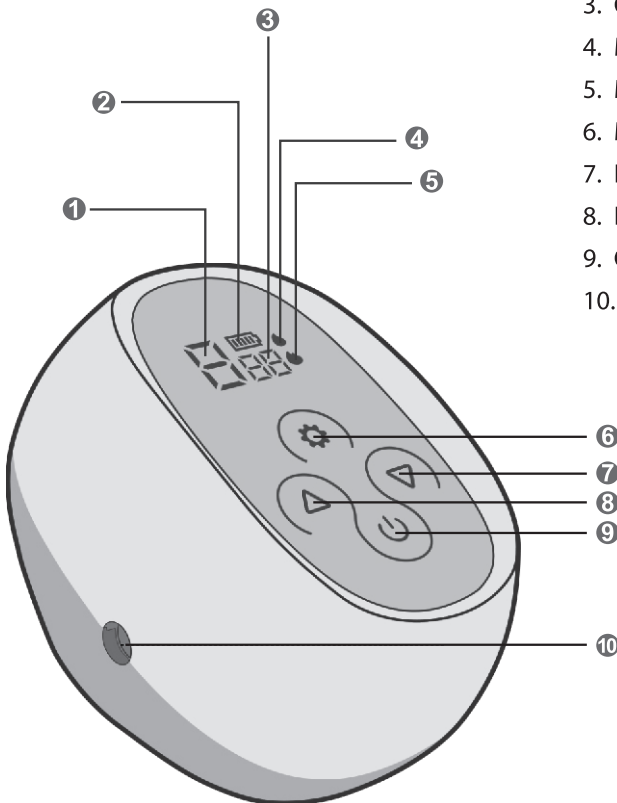
**breast pump**

Please read the instructions carefully before using and keep for future reference

## Catalog

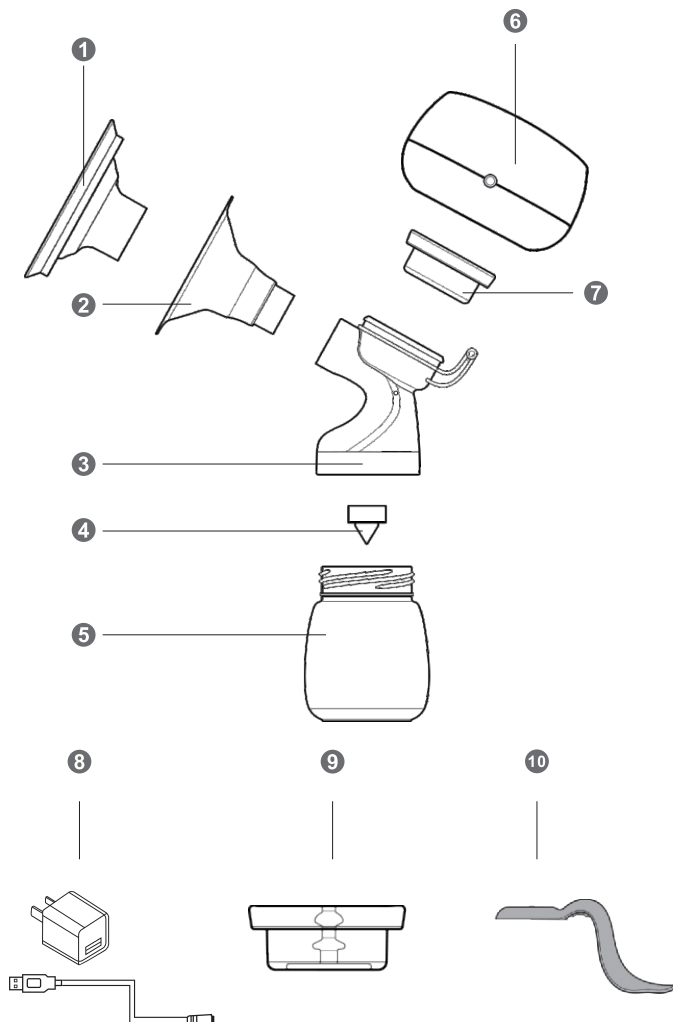
1. Button and Function
2. Components and Names
3. Installation
4. Sterilisation and Operating Mode
5. Instruction and Warning
6. Troubleshooting, Storage and Heating of Breast Milk

## Button and Function



1. Operating Level Display
2. Battery Level
3. Operating Time Display
4. Massage/ Stimulation Mode
5. Milk Extraction Mode
6. Mode Change Key
7. Level Down Key
8. Level Up Key
9. On-Off Key
10. Adapter Port

## Components and Name



❶ Silicone Massage Pad

❷ Silicone Suction Valve

❸ Silicone Vacuum Unit

❹ Manual Suction Handle

❺ Breastshield Flange

❻ Feeding Bottle

❼ Adapter

❽ Breastshield Body

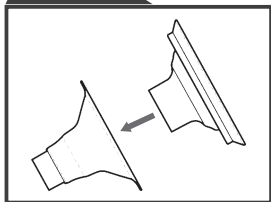
❾ Electric / Suction Unit

❿ Manual Suction Unit

## Installation

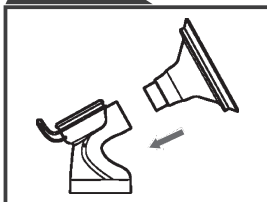
**⚠** Before assembling the breast pump, please sterilise all parts and make sure your hands are clean.

### STEP 01



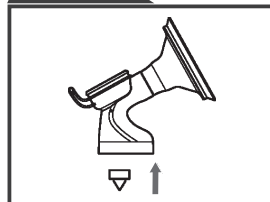
Fix the silicone massage pad into the breastshield flange, Make sure it is securely fixed.

### STEP 02



Install the whole flange to the breastshield body.

### STEP 03



Fix the suction valve on the breastshield body. Ensure to fix securely.

### STEP 04



Screw the whole unit to the feeding bottle tightly.

### STEP 05



Install the silicone vacuum unit on the breastshiled body

### STEP 06



Install the electric/suction unit on the silicone suction vacuum and make sure to fix it tight.

### STEP 07



Electric Breast Pump installation complete

For manual operation install the manual suction unit and handle in place of the electrical/suction unit.

## Sterilisation

 **Note:** The electrical/suction unit and the adapter should not be sterilised.

Please refer to the below instructions.

1. Microwave Oven: Please use sterilisation container or bag when using a microwave to sterilise. There must be water in the container when heating milk.
2. Boil sterilisation: Put the components in boiling water for about 10 minutes. Make sure the water level is not lower than the components, in order to avoid damage to the components due to direct contact to heat.


## Operating Mode

### **Power Supply**

Connect the adapter to the electric/suction unit and plug to the electric supply. When connected to power supply the power mark will illuminate. Remove power supply when breast pump is not in use.

### **Battery Mode**

The breast pump can also be used with the built-in rechargeable battery. When fully charged the battery mark will illuminate. When the battery mark starts to flash it means the battery charge is down, please plug in the adapter to charge. Adapter need not be connected to use in battery mode.

 **Warning:** improper use of battery may damage the product. Do not try to disassemble the battery unit. Avoid over heating.

## Instructions

Before assembling the breast pump, please sterilise all parts and make sure your hands are clean. Assemble the breast pump according to the instructions provided. Use the breast pump in the stimulation mode. For extracting, change to extraction mode, sit up slightly forward (do not lie down or tilt the breast pump). Align the silicone massage pad to the nipple and press it tightly and make sure there is no gap for air to escape.

### ON - OFF Key

Long press the power button to switch on and soft press to turn off.  
Default Working Time: The machine will turn off automatically after 30 minutes of working.

### Level up Down

You can also manually increase or decrease the levels in any of the modes to adjust to your requirement. The greater the level higher is the suction. (Research shows the suction is more effective in the most comfortable situation/ level).

### Mode Key

When power on, the breast pump by default starts in the stimulation mode. There are 9 levels in the stimulation mode. From 1-4 levels, it will advance to next level automatically after 45 seconds. From 5-9 levels, it needs to be operated manually. Once 9 levels of stimulation mode are completed, you can progress to Extraction mode. There are 9 levels in extraction mode as well. All levels of extraction mode need to be changed manually.

Press  button to change between stimulation, extraction

## Warning

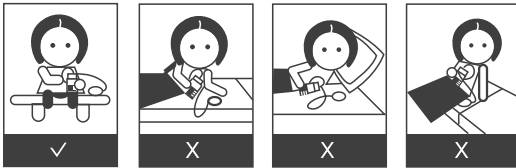
1. Please read the instruction fully and carefully before use.
2. Do not wash the electrical/suction unit in water or any other liquid.
3. Do not sterilize the electrical/suction unit.
4. Once you sterilise the suction silicone, dry the unit thoroughly before use.
5. Make sure there is no water or moisture in the silicone parts before using the breast pump.
6. Do not use any other adapter other than the one provided.
7. In case you want to replace the adapter. Please use AC adapter of 110-240V input and DC5V,1A output.
8. Make sure your hands are dry before operating the electrical/suction unit.
9. Damage caused due to water in the electrical unit will not be covered under warranty.

## Troubleshooting

The suction is weak or no suction

1. Check whether the suction silicone and the electric/suction unit is tightly sealed. (No air gaps)
2. Check whether the silicone massage pad is fixed properly (no air gaps)
3. Check whether the Silicone valve is fixed properly.

While extracting, the mother should sit upright. Do not lean forward or lay on the side which might cause the breast milk to flow back wasting your babies valuable feed.



Please dry the interiors thoroughly before using. Any water residue or moisture may affect the working of the breast pump and might even cause damage.

## Storage and Heating of Breast Milk

### 1. Storage

After extracting close the container tightly and refrigerate the breast milk immediately. (Refrigerator compartment or freezer)



### 2. Heating

After defrosting, use a bottle warmer or place bottle in boiling water to heat breast milk instead of microwave oven, to avoid loss of nutrients.

### Attention

1. To defrost, put the bottle in the refrigerator compartment.
2. Gently shake the feeding bottle so as to mix evenly.
3. Do not put the frozen breast milk directly into the microwave or boiling water, this may result in loss of nutrients.
4. Do not freeze the defrosted milk again.
5. Do not mix fresh and defrosted milk.

---

**Imported & Marketed By:**

Brainbees Solutions Pvt Ltd  
Rajashree Business Park, Plot No: 114,  
Survey No. 338, Tadiwala Road,  
Near Sohrab Hall, Pune 411 001

**Customer Care :**

☎ 020 - 46608179  
✉ [customercare@brainbees.com](mailto:customercare@brainbees.com)

**Customer Care Address:**

Same as Importer's address