



Gift your little one the luxury of  
**CuddlyCoo Baby Hammock**

Like us on [f www.facebook.com/cuddlycoo](https://www.facebook.com/cuddlycoo)  
Should you have any queries Please mail/text/call us..  
we are more than happy to help!!

Contact : [info@cuddlycoo.com](mailto:info@cuddlycoo.com) Ph : +91 9886300491

Visit us at [www.cuddlycoo.com](http://www.cuddlycoo.com)

### Why CuddlyCoo?

We at CuddlyCoo have endeavoured to create a reliable, safe and durable product by using carefully sourced high quality components.

Patience is the key to settle your baby in her new environment. Allow the natural vertical motion of the hammock to effectively lull your baby to sleep. This helps your baby to recall the soothing movements she felt in the womb.

### You have more reasons than one to be proud of your purchase!

- CuddlyCoo Baby Hammock naturally soothes baby with its gentle bounce and cocoon like design.
- It keeps your baby safely on her back gently supporting the natural C curve of her spine.
- Custom made spring gives a smooth bounce to comfort your baby
- The baby hammock helps the baby to choose its position of sleep without the fear of suffocation.
- The wooden hanger holds the hammock in place and prevents it from sliding up and down.
- The mosquito net prevents your baby from the bites and stings in a tropical climate.
- CuddlyCoo is light, making it easily transportable to any location. Hence your baby can enjoy a nap indoors or outdoors!
- The adjustable rope gives you the option to hang it from 3 feet or lesser from the ceiling.

### These make you CuddlyCoo Baby Hammock Stand..

1. Ceiling Hook 2. Adjustable Rope 3. Spring 4. Spring Cover 5. Wooden Hanger 6. Baby Hammock 7. Mosquito Net

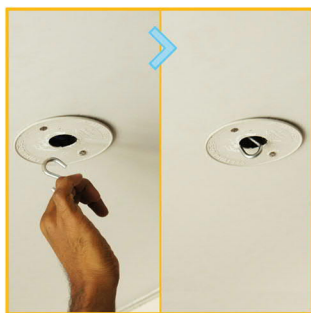
### Making your CuddlyCoo SAFE

- CuddlyCoo Baby Hammock can be used until the baby starts turning over on her belly inside it.
- Ensure that the hammock is correctly assembled. Regularly check the Safety belt and hook is securely fastened.
- Regularly inspect the hammock for wear and tear. Do not use the hammock if any part is missing or broken.
- Place your baby on her back, towards the covered side of the hammock
- Do not leave anything in the hammock that could cause risk for suffocation or choking.
- Never leave the baby unattended in the hammock.
- CuddlyCoo does not provide a mattress as it could be a possible hazard for the baby in case she rolls over.

## Putting your CuddlyCoo Baby Hammock together

You can also see the installation video at [www.cuddlycoo.com](http://www.cuddlycoo.com)

**Step 1 :**  
Hook on the ceiling hook



**Step 2 :**  
Hang the rope



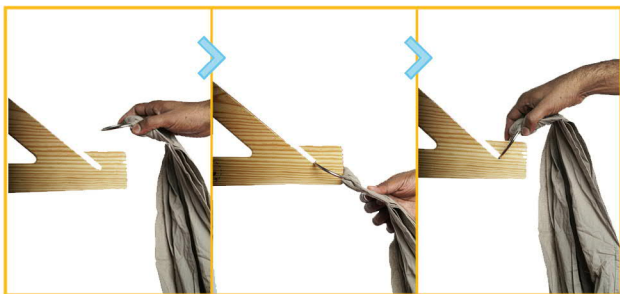
**Step 3 :**  
Suspend the spring .  
Hang the spring onto the  
free end of the rope.



**Step 4 :**  
Hang the wooden hanger from  
the spring



**Step 5 :**  
Put the hammock onto the hanger. Ensure that you  
tilt the ring and slide it in as shown.



**Step 6 :**  
Do the same on the  
other side.



**Step 7 :**  
Thread one end of the safety belt(attached  
to the spring cover) through the lower loop  
of the ceiling rope. Thread the other end  
through the loop in the wooden hanger.



**Step 8 :**  
Stick the Spring cover  
together using the velcro



**Step 9 :**  
Place your baby safely in the  
hammock and sing a lullaby along!



## FAQs

**1. After assembling, the Hammock is almost touching the ground (because my ceiling is low). What do I do?**

The rope can be easily adjusted to get the desired height. Fold the rope into half or even into 4 to suit your ceiling height, till you get the desired height for the Hammock. Ideally the Hammock should be at a height which will help you put the baby in it easily – normally waist height. You can also knot the rope in between so as to reduce the height further.

**2. My baby's head is positioned lower than her buttocks when placed in the hammock. What is the right position?**

Your baby must be placed towards the covered side (the head side) of the hammock, NOT in the center of the hammock. There may be loose cloth at the leg side; this is fine let it be.

**3. What is the use of the safety belt?**

As the baby grows the spring can stretch way more than you may have intended thereby making the baby touch the floor. The safety belt keeps the spring stretch at bay hence

- Preventing the baby from touching the floor
- Controlling the up and down motion to your desired max length.

**4. Mosquitoes seem to get in even after putting the net. What do I do?**

The mosquito net needs to touch the floor and lay on the floor. This will prevent mosquitoes from entering from the underside.

**5. I'm afraid the hammock cloth is too long for my little one.**

Your baby must be placed on her back at the covered side (the head side) of the hammock at all times. Let the rest of the cloth hang loose at the leg end. It is intended for use from birth till the baby is 12 kg, hence it is made to suit a growing baby as well.

**6. I am worried the S Hook might come out**

The S Hook is specially designed so that it can be hung on almost any kind of ceiling hook and does not slide out on swinging.