

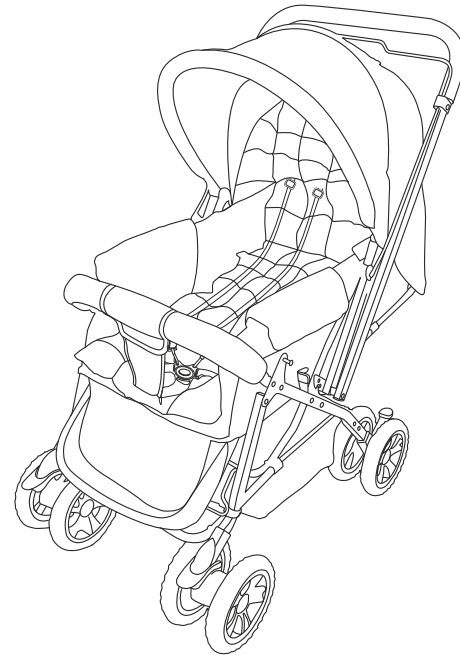
0 to 36
Months

Carrying Capacity
Upto 20 kg

User's Manual

Babyhug Comfy-Ride Stroller

Style Code - B6ST019



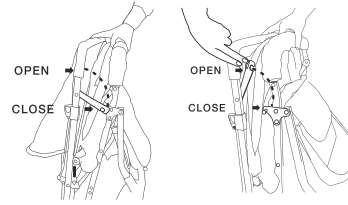
babyhug™
baby stroller

- Strong & Sturdy Frame
- Multi Reclining Positions
- 5 Point Safety Harness
- Swivel Wheels with Lock

Note: Please take a few minutes to read this manual. This will help you assemble and use the stroller suitably. Keep this manual for future reference.

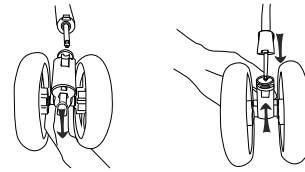
To Unfold Stroller

Unfold as shown in the picture, make sure the stroller is fully erect and latched. Buckle the hood into the latch.



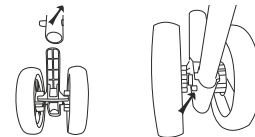
To assemble wheels

Insert leg unit in to the wheel set and snap the fastener in place. Repeat the same for other wheels.



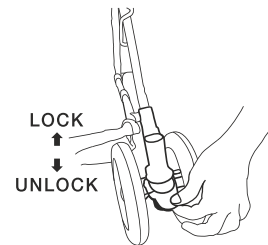
To assemble rear wheels

Push both wheel mounts all the way, until they snap on to the legs. Make sure they are securely fixed.



To alternate between swivel and non-swivel wheels

Push buttons down to lock and pull up to release swivels.



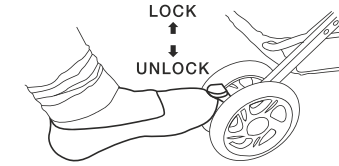
To adjust backrest

Pull the bar, as shown in the picture, slightly up and adjust the back rest to desired position.



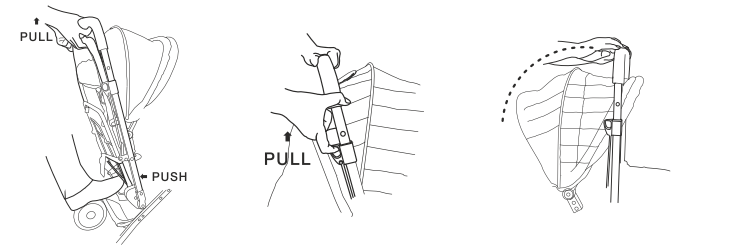
To use brakes

As shown in picture, step down to park and lift up to release.



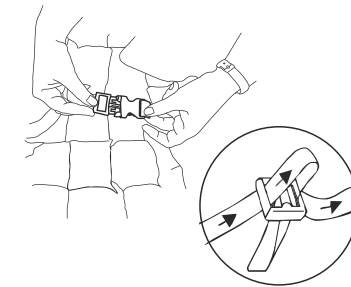
To fold stroller

Before folding the stroller, position the handle behind the canopy. Adjust backrest to the upright position and fold canopy. Release hook, step on the rod and push handle forward to fold the stroller, as shown in the picture. Buckle the hook securely.



Warning!

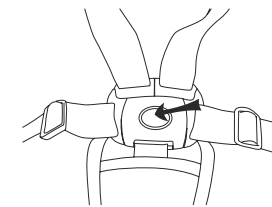
To avoid serious injury from falling or sliding out of the stroller, always use the 5 point safety harness. Snap buckle together.



Adjust belt to get a snug fit around the child.

To open buckle Press in the middle of the buckle to release.

- Never leave the child unattended in the stroller
- Never use the stroller on stairs or escalators. Use extra care while going up or down the slope
- Do not place things more than 4.5kg in the storage basket
- Do not hang purse, shopping bag, parcel or accessories on the handle



Care and Maintenance

- Do not machine wash the seat. Seat should only be wiped with mild soap. Do not soak the material
- Removable seat pad and canopy can be machine washed in lukewarm water on delicate cycle and drip dried. Do not use bleach
- Periodically check the stroller for loose screws, worn parts, torn material and stitches. Replace or repair the damaged parts as needed immediately.
- Excessive exposure to sun or heat might cause fading of parts.

Imported & Marketed by
Brainbees Solutions Pvt. Ltd.
Corporate & Registered Office Address:
Rajashree Business Park, Plot No: 114,
Survey No. 338, Tadiwala Road,
Near Sohrab Hall, Pune 411 001

Customer Care No. :
02030556310
E-mail:
customer@brainbees.com
Customer Care Address:
Same as Importer's address

Made in China